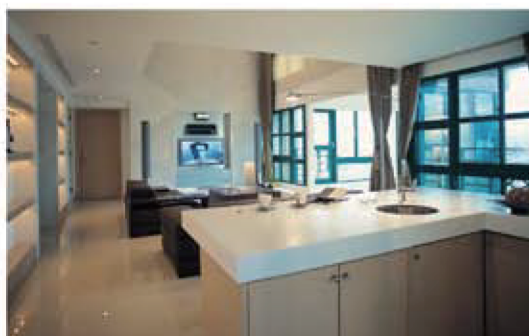




南亞舒活

裝潢板

NAN YA ECO Celuka Board



南亞舒活裝潢板適用於容易潮溼、蟲蛀之室內裝修板、櫥櫃及家具板，例如：廚房、浴室、儲藏室、地下室、別墅、渡假村、遊艇等，適各類木工機械加工。

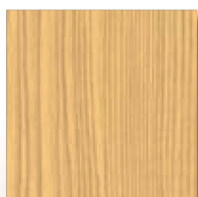
Nan Ya ECO Celuka Board is a Integral hard skin cellular PVC board. It is a perfect replacement for wood in most interior decoration applications such as furniture, cabinet, door panel, trim board or partition.

It will not rot, crack, or split and is termite resistant. The maintenance cost is much less than painted wood or other laminated board.

- ◆ **厚度 Thickness :**
10、12、15、18、20、24、30mm
- ◆ **標準尺寸 Size :**
4×8尺 (1220×2440mm)
- ◆ **色水 Colors :**



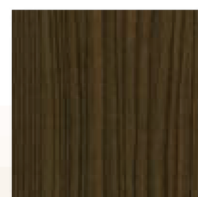
白橡 # AWR
Oak



楓木 # 3WR
Maple



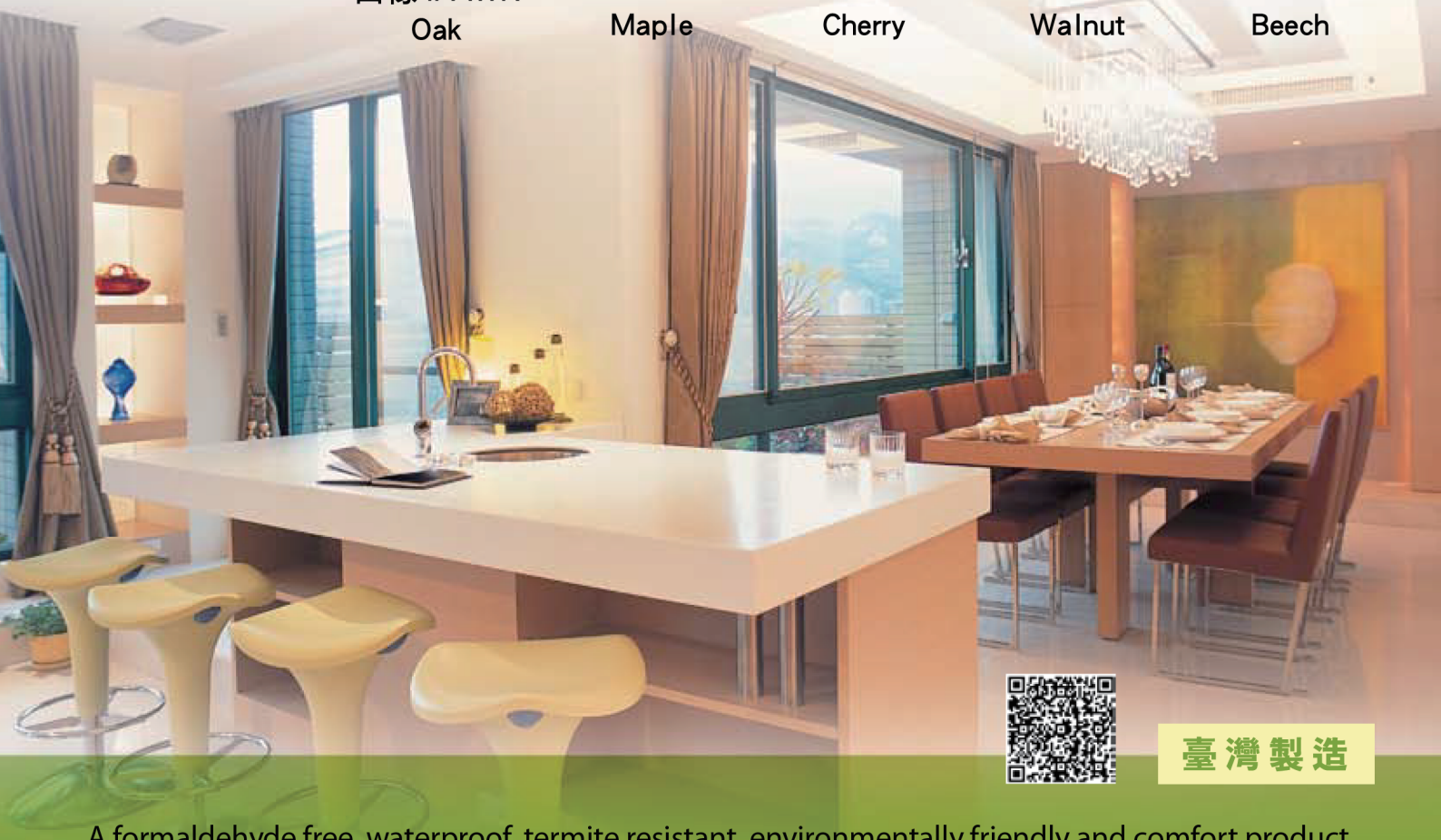
櫻桃 # EWR
Cherry



胡桃 # DWR
Walnut



山毛櫸 # TWR
Beech



臺灣製造

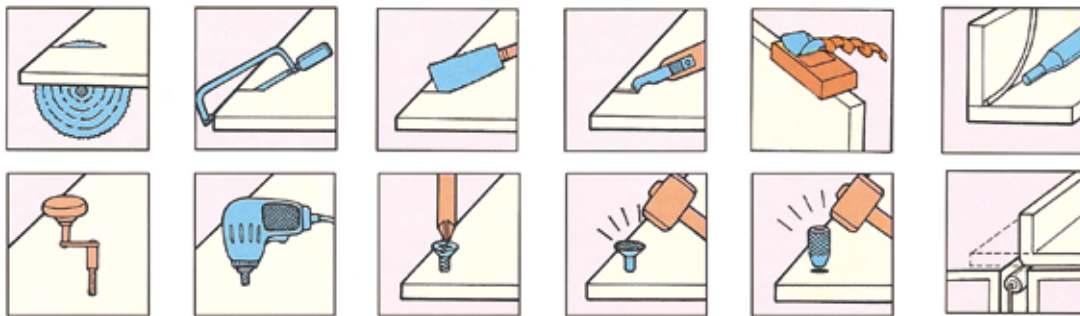
A formaldehyde free, waterproof, termite resistant, environmentally friendly and comfort product.

◆ 產品特色：

1. 無防腐劑，不含甲醛
2. 防霉抗菌、不吸水，不受潮
3. 防蟲，防白蟻
4. 具自熄性，安全性高
5. 抗化學性，抗腐蝕性
6. 低導熱性，隔音，高絕緣性
7. 免上漆或貼皮、耐久不龜裂、易維護

◆ 施工性：

南亞裝潢板適用於一般工具或木工機械，可迅速且容易的進行裁切、打釘、鑽孔、刨邊、黏合、熱彎等各式加工。



◆ 儲運及使用等注意事項：

1. 產品施工前請以適當棧板或捆包方式，任何情況下均應保持平放。
2. 請存放於陰涼處，勿放置於高溫(60℃以上)之環境中。
3. 出廠之產品長度可能大於標準值，施工前請進行最後修剪。
4. 因產品仿木製程，各批之色水可能略有差異，也會隨時間或日照而正常褪色。
5. 加工前後，請保持板面清潔，避免粉塵及加工碎屑殘留。

◆ 產品物性 Product properties：

測試項目 Item	測試方法 Test method	測試值 Value
甲醛釋放量 Formaldehyde	CNS 11342	無 Not detected
吸水厚度膨脹 Thickness swelling rate due to water absorption test (%)	CNS 11342	0.08
防霉 Anti-mildew	ASTM G- 21- 96	Pass
抗菌 Antibacterial	JIS Z2801	Pass
歐盟 RoHS 無重金屬性能	IEC 62321- 2008	無 Not detected
防焰性 Flammability	CNS- 7614, UL- 94	防焰一級，V-0

◆ 附註：

本說明書中所列試驗數據及圖片僅供參考用。

◆ Product properties:

1. No toxic, formaldehyde free.
2. Mold, mildew and bacterial resistant. Low absorption of water and wet resistant.
3. Insects and termite resistant.
4. Self-extinguishing and safety.
5. Chemical resistant and non-corroding.
6. Low thermal conductivity, sound and electric insulation.
7. Requires no painting or laminating. Will not rot, crack, or split. Easy care and low-maintenance.

◆ Workability：

Easy to work with- cuts, nails, screws, routes, glues, and heat bending better than wood. No special tools or machine when working.

◆ Notices for storage and installation:

1. Properly palletizing or bundling Nan Ya ECO Celuka Board before installation. Store on a flat and level surface in any condition.
2. Do not store ECO Celuka Board in a high temperature (60℃ ↑) environment.
3. ECO Celuka Board are possibly supplied over length to allow for final cutting during installation.
4. Color variation from batch to batch will be possible since we refer to wood products process. Slight color fading may occur over time especially with direct sun exposure.
5. Keep product free of dirt and debris at job side before or after installation.

◆ Note：

The testing data and pictures in this catalog are for reference only.



南亞塑膠工業股份有限公司
NAN YA PLASTICS CORPORATION

塑膠第三事業部營業二處

地址：台北市105敦化北路201號 電話：(02) 2717- 8173

傳真：(02) 2514- 0628

(2012.12.3000.38)